

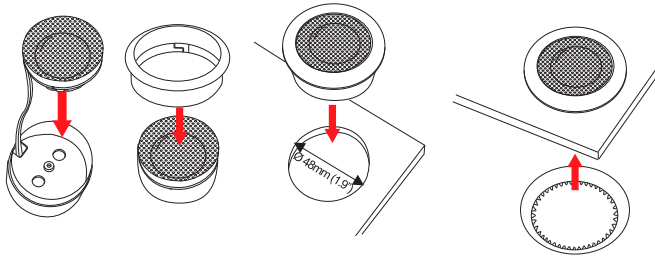
# **PULSE TW-1**

**Installation Guide**

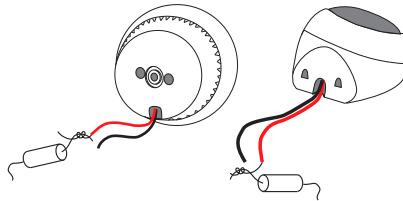
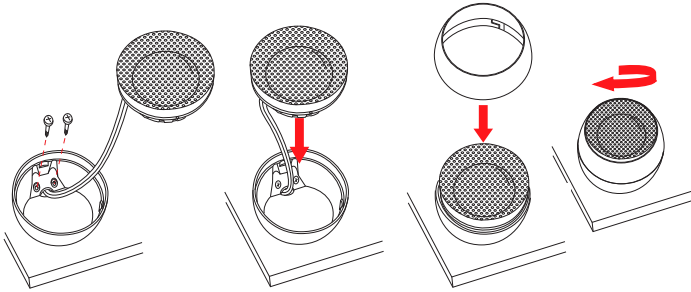


*[www.morelhifi.com](http://www.morelhifi.com)*

## Tweeter Mounting Option 1



## Tweeter Mounting Option 2



## Specifications

Nominal Power Handling	120W	Voice Coil Diameter	25 MM (1")
Transient Power - 10 ms	250W	Voice Coil Former	Aluminum
Nominal Impedance	4 OHM	Voice Coil Wire	Copper
Sensitivity (2.38V/1M)	90dB	Magnet System	Neodymium
Frequency Response	2000-22000	Dome Material	Soft Dome
Resonance Frequency	1100 HZ		